

Yonkers Middle High School 2020 - 2021

YONKERS MIDDLE/HIGH SCHOOL

SCHOOL REOPENING PLAN





- **Principal**

Ms. Jade Sharp

- **Assistant Principals**

Ms. Melanie Vancol – 6th and 7th Grades

Mr. Darryl Mack – 6th and 8th Grades

Ms. Sylvia LaRue Branchcomb – 9th and 10th Grades

Mr. Andrew Cohen – 11th Grade

Ms. Yamile León – 12th Grade



School Support Staff

- **Guidance**

Ms. Blake – 9th and 10th Grade

Ms. LeTang – 9th and 10th Grade

Ms. Fortino – 11th and 12th Grade

Ms. Jones – 11th and 12th Grade

- **Psychologist**

Dr. Byrd

- **Social Worker**

Ms. Holmes

- **Special Education Coordinator**

Mr. Kaufman

- **Nurse**

Ms. Cavaluzzi



Health and Safety



The Health and Safety of the entire YMHS learning community begins at home. Please assess your wellness and/or your child's wellness. If you or your child are experiencing any COVID-19 related symptoms (including a temperature of 100° or greater) please remain home.

- Begin screening at home. Parents are responsible for checking their child's daily temperature and completing the health screening questionnaire. Schools will determine additional screening, as needed.
- Parents/guardians to complete Daily Attestation Form (health survey) for each child. Parents/Guardians must inform the school in the event of health status changes. The Daily Attestation Form may be completed via App (when available), online and emailed to acavaluzzi@yonkerspublicschools.org or brought in to your child's teacher. All Daily Attestation Forms will be maintained on file in the school office. Any responses of "yes" on the Daily Attestation Form will be referred to the School Health Office.



Health and Safety



-
- Daily temperature screening will occur upon entry to YMHS. Appropriate Face Coverings must be worn at all times.
 - School Nurses will be the school COVID-19 Coordinators and will monitor community and school spread of virus. The health offices will have an Isolation Space in the event a student or staff member needs to be isolated. There is a health office on the first floor.
 - School entry times will be in compliance with Social Distancing Guidelines, to facilitate temperature screenings and collect Daily Attestation Forms brought to school. **Students only** (Parents/Visitors not allowed to enter) will enter through the designated entrance of the building for a temperature screening as determined by arrival and dismissal protocols.



Health and Safety

MASK



All Staff and Students will be required to wear masks

- Face Coverings **must** be worn for the entire school day.
- Health and hygiene protocols will be followed as applicable to student individual needs.
- Student/Staff safety protocols will be followed in accordance with the YPS reopening plan.
- Classrooms will be arranged to maintain social distancing between students and staff.
- Visual aids/Signage illustrates appropriate spacing and traffic flow throughout school building (e.g., designating hallways or entrances as one-way), the signage will be age/grade appropriate.
- For safety reasons, visitors to the building will be restricted to only necessary/ emergent situations.
- In-person student drop-off or pick-up is restricted to one parent or caregiver. Parents/Care-givers should refrain from early sign-outs. Pick-up should be during designated dismissal times only. Please schedule all appointments/activities for hours outside of your child's school schedule.

Health and Safety

Early student sign-out:

- Parent must contact school prior to picking up student.
- Parent/caregiver will be met at the front door.
- ID must be shown and presented to the front door.
- Front desk will communicate with the main office to confirm.
- Parent must be on emergency card.



Morning Arrival Procedures



- Bus Arrival times are scheduled for 7:45 a.m. – 8:00 a.m.
- Entrances will be manned by Administration and Safety
- Grades 9-12 enter through Main Doors for temperature screenings.
- Grades 6-8 enter through Flag Pole Doors for temperature screenings
- As students and staff arrive they will have their temperature checked.

Dismissal Procedures



- Dismissal will be staggered at YMHS
- SWD will be released by 2:00 p.m. – 2:10 p.m. the latest
- Remaining student will be released by grade level
- Upper Classmen (11th and 12th graders) will have schedules that will allow them to end school earlier in the day



Facilities

- Hand sanitizing stations are located throughout the building. Frequent hand washing is encouraged.
- Visual aids/Signage illustrates appropriate spacing and traffic flow throughout school building (e.g., designating hallways or entrances as one-way), the signage will be age/grade appropriate.
- Classrooms will be arranged to maintain social distancing between students and staff. Student/Teacher desks will face one direction.



Facilities

- Hold physical education classes outside whenever possible. Floor spots for inside physical education classes adhering to the extended social distancing guidelines. The gymnasium floor will have specific markings to that follow social distancing guidelines.
- Activities that do not allow for social distancing, including assemblies and not limited to in-person field trips and large group use of playground equipment simultaneously will be suspended. Outdoor spaces will be utilized whenever possible.
- Social distancing to be practiced in all student restrooms. Handwashing signage in restrooms will serve as a reminder of appropriate handwashing procedures.



Facilities

- All drinking fountains will be turned off. Students are encouraged to bring in their own bottled water. Filtered bottle filling units are to be installed in every YPS building. (we will notify families when this occurs at YMHS)
- All emergency drills (including but not limited to fire drills, lock down procedures, evacuations, etc.) will be practiced in the safest way possible.
- As per Yonkers Public Schools reopening plan, CDC guidelines, NYS Health Department:
 - Classrooms w/ windows - Windows will be functioning and can be opened for additional circulation and air flow
 - Classrooms w/o windows have appropriate ventilation for air circulation

Nutrition



- The YPS Food Services will provide daily “grab and go” breakfast.
- YPS Food Services will provide lunch to all students; however, students will receive at least one hot meal per session.
- “Grab and go” lunch will always be an option.
- Students bringing their own lunch must do so in a disposable bag. No reusable lunch bags or boxes will be allowed.
- Social distancing protocols will be adhered to in cafeterias.
- Students are not to congregate in the cafeteria and must maintain social distancing.

Transportation



- Parents/Care-givers are required to insure their children are not experiencing COVID-19 symptoms and complete the Daily Attestation Form before boarding the YPS school bus. Sick students should not come to school.
- Per YPS guidelines busses will be cleaned and disinfected using CDC and DOH recommended products.
- Face coverings must be worn while boarding, riding and disembarking school busses social distancing protocols must be followed at bus stops, while on the bus and when arriving and departing the school.

Transportation

- Siblings and students residing in the same household that are eligible for district transportation may sit together.
- Parents/Care-givers may consider walking or transporting their children to school to reduce density on buses.



Social and Emotional Well Being



- Pupil Support Team Members (School Social Worker, School Psychologist, Guidance Counselors, and Nurses) will be available to address students' needs and prepare socially responsive support systems.
- Secondary Re-Think Ed Social-Emotional Learning Program protocols and Restorative Practices will be followed.
- Student and Parent Virtual Orientations and Presentations will be held prior to school opening and throughout the school year.

Teaching and Learning



- Digital instructional platforms will be used for remote learning. Grades 6 -12 will utilize Microsoft Teams. These instructional platforms will be used during in-person, hybrid, and 100% remote models.
- Other instructional tools e.g. Clever, Khan Academy Schoology, Turnitin, Castle Learning, Nearpod, etc. will be utilized via Teams Platform
- Social distancing markers will be used for classroom seating. School locker cannot be utilized at this time.

Teaching and Learning



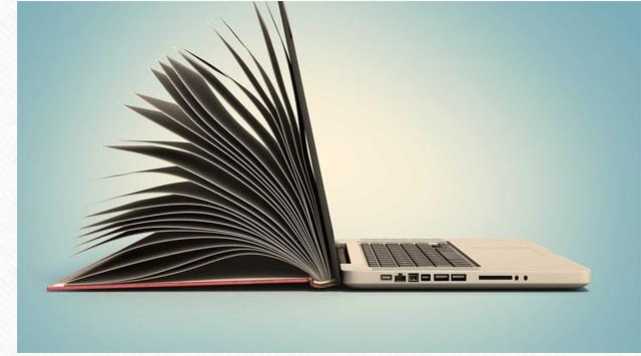
- As per NYSED guidelines, Next Generation Learning Standards and appropriate curriculum will be utilized.
- All instructional experiences will be inclusive, culturally responsive and consider the academic and social- emotional needs of all students.
- Students will receive instruction and support services as per grade level requirements, IEP indicators and multi-language learner needs.

Teaching and Learning



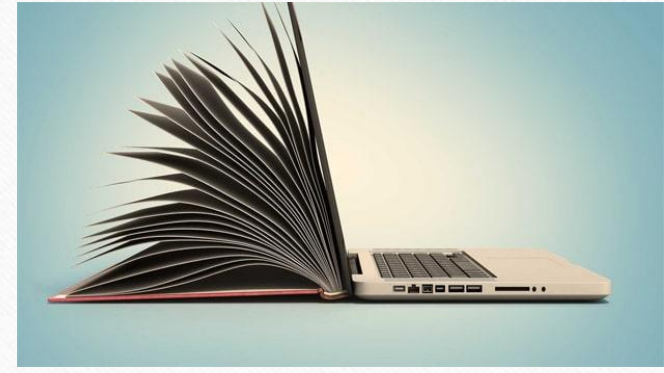
- Co-curricular programs (art, music, physical education, technology, etc.) will be scheduled and administered following social-distancing and safety protocol guidelines in accordance with NYSED regulations.
- In a hybrid model, Flexible Wednesdays will be used for professional development, lesson planning, and student supports, teachers will provide office hours and wellness checks as well.

Hybrid Instruction



- Students receive instruction in school at least 2x per week (excluding holidays).
- Remote learning takes place on the day's students are not in a school.
- Related services may be provided in-person or remotely.
- Social emotional learning and supports are integrated into the instructional program and may be delivered in-person or remotely.

Hybrid Instruction



- Students will be divided into 4 letter cohort groups A through D (Siblings will be placed in the same cohort).
 - Track A will attend school Monday and Tuesdays (excluding holidays)
 - Track B will attend school Thursdays and Fridays
 - Track C will attend school Mondays, Tuesdays, Thursdays and Fridays
 - Track D have opted for 100% remote instruction



100% Remote Instruction



- Students receive instruction remotely 5x per week (excluding holidays).
- Related services are provided remotely.
- Social emotional learning and supports are integrated into the instructional program and are delivered remotely.
- Wednesday's are for teacher follow-up with students and families and professional development.
- Microsoft Teams is YMHS's platform for grades 6 through 12.

Technology and Connectivity

- **Access to Internet**

Many families have access to the Internet however, there are families in the community that do not have access to Internet or technology. The district has been working with service providers to find low cost solutions for families that do not have Internet. This includes finding the means and funding to provide “portable hot spots” to families. Wi-Fi access is also accessible immediately outside of school buildings, including many school parking lots and the public libraries provided they are open.





Technology and Connectivity



- **Technology Access Survey**

YPS surveyed families on their access to technology, the Internet and digital learning experiences during the Spring and Summer of 2020. In addition, website and the IT program dashboard analytics provided the district with information on the number and percentage of students who were able to access digital resources and information and the methods that were being used by families to access it (phones or computers and types of browsers). This information has been used to inform the district on how digital content should be displayed so that it can be read by phones as well as computers. In addition, it has been used to illuminate the needs of our school community.

Technical Support



The district provides support for technical issues through several means. The district Technology Department Help Desk is accessible during business hours through email:

helpdesk@yonkerspublicschools.org and by phone (914) 376-8637. Other supports include:

- Assistance with log on and password issues
- Assistance with devices and instructional technology
- Videos posted for families, students and teachers on the Distance Learning website and individual school websites providing instruction on accessing district programs, including Microsoft Teams and Clever, the district's instructional technology single-sign on system
- Technicians are assigned to school buildings to provide support
- Library Media Specialists and technology liaisons are available to support students and teachers in the schools
- District technology staff loaning laptops to families in the main atrium of the Yonkers Public Library and District building are easily accessible to the public



ATTENDANCE



Per NYSED guidance district policies and procedures must focus on the academic consequences of lost instructional time and address absences before students fall behind in school. It is critical for schools to use a variety of creative methods to reach out to students and their families who have not engaged in distance learning.



Attendance Tracking and Reporting



- Teachers must track attendance in PowerSchool, whether students are attending at schools or engaging from home
- Grades 6-12 teachers will take attendance for each instructional class period



Chronic Absenteeism



- Reports are readily available in PowerSchool to assist schools in identifying students at-risk of chronic absenteeism, so as to develop interventions, problem solve with families, and improve attendance
- All conversations, meetings, and other forms of communication must be documented on “Log Entries” on the student's page in PowerSchool